

DENT/DIGITEST

Test Phantoms for Quality Assurance and Quality Control Used with Dental X-Ray Equipment

THE DENT/DIGITEST phantom is designed to be used for QA/QC routine testing in Dental X-Ray applications ranging from intra-oral, panoramic and cephalometric equipment.

Only one exposure is required to collect all necessary parameters to determine the imaging quality of the x-ray equipment. After the exposure, the test image is evaluated visually.

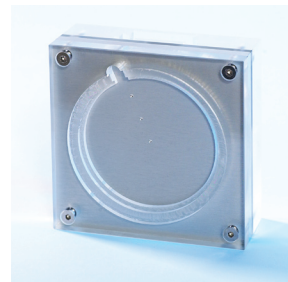
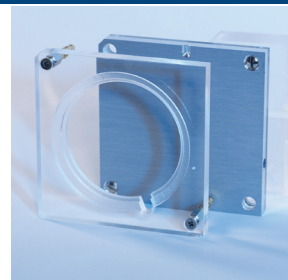
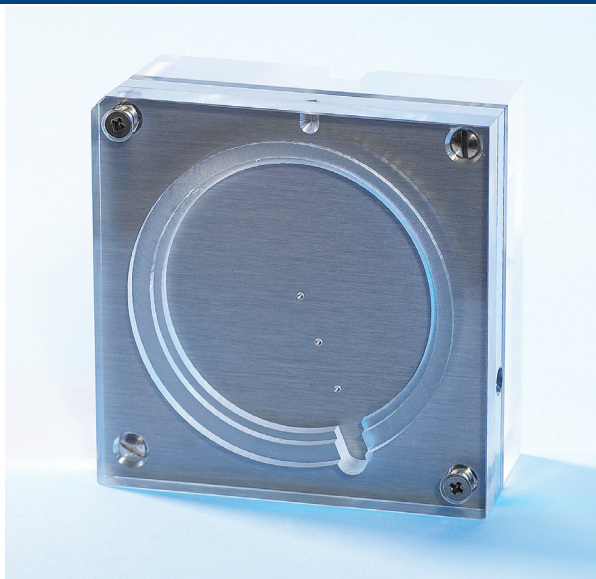
The DENT/DIGITEST line of phantoms fully comply with EC 61223-3-4 and IEC 61223-2-7, DIN 6868-151 and DIN 6868-5 as well as IPEM, ÖNORM, PN-EN standards and AFSSAPS regulations.

Phantom and Test Procedure

QC tests are carried out at initial equipment installation to establish a visual reference. On a regular routine basis, they are meant to ensure the constancy of the system's imaging capabilities. Any deterioration in imaging performance would be revealed by the visual evaluation of the test images. A single image of the QA/QC phantom contains a lot of crucial information for that purpose.

Test Parameters

- Spatial Resolution
- Low Contrast Resolution
- Radiation Field Alignment
- Image Homogeneity
- Dose Equivalency Check
- Artefacts, Image Flaws, etc.



Customised Holder Design

For QA/QC performance in panoramic x-ray equipment, a customised holder can be provided for fast and reproducible positioning of the phantom in the tomographic plane. Adaptors for a variety of systems are available:

AJAT ART	Plus Series
BlueX	PantOs Series
GENDEX	Orthoralix 8500/9200
J. MORITA	IC-5/Veraviewepocs
KODAK-CARESTREAM . .	K8000/K9000
MYRAY	Hyperion
OWANDY	Imax Series
PLANMECA.	Proline/ProOne/ProMax
SIRONA	OP100/OP200/Orthophos Series
SOREDEX	OP30/OP100/OP200
VATECH/EWOO	Pax/Picasso Series

NB: The holder can be customised for any panoramic system!

A Genuine History of Invention

The first DENT/DIGITEST was developed and designed in the mid 1990's. This phantom soon became the National Standard in Germany when it was described and represented in the DIN standard text. Some time later it was also discussed by the European IEC standard committee and became a standardised solution for Europe as well.

Even today, the phantom has not changed much in its appearance. However, we have added genuine features to further enhance the ease of use of the phantom: the separable design for precise panoramic and cephalometric testing, an enhanced geometric test, a customisable panoramic holder and a special holder solution for cephalometric systems.

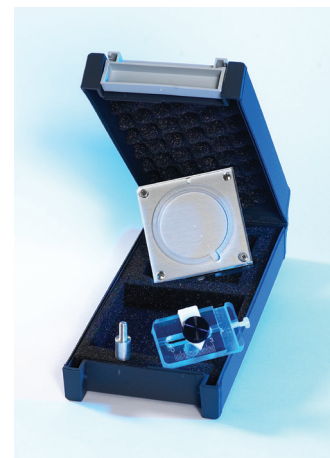
Phantom Description

- Separable Design for all dental modalities
- Size: 8 x 8 x 3.6 cm (L x W x H)
- Slit to slide out intra-oral sensor without pulling the cable and/or secure sensor cable routing
- 2-point fitting for cephalometric systems

- V-nut for optional DENT/DIGI H OPG holder fit (see accessories below)
- 3 centering rings with different diameters
- Slots for digital storage screen, intra-oral sensor, dose detector
- 45° Line Pair test (2.5/2.8/3.1/5.0/5.8/6.3 Lp/mm; 0.05 Pb)
- 4 Low Contrast objects (Ø 2.5/2/1.5/1 mm)
- Integrated filtration 6 mm Al (purity 99.5% guaranteed)

Delivery includes

- ✓ DENT/DIGITEST Test Phantom
- ✓ DENT/DIGI H Customised Phantom Holder
- ✓ CU08 Added Filtration for Pano/Ceph
- ✓ Manuals
- ✓ Transport Case with Foam Insert



Also available

DENTII

DENTII MPC

CU10D

DENT/DIGITEST M2

DIDO/EASY

Variety of Customised Holders

Phantom for Conventional Dental QA/QC

Phantom Holder for Conventional Pano/Ceph

Added DIN Filtration for Digital Pano

Phantom for Critical Manufacturer QA/QC

Constancy Test Dosimeter

Manufactured by QUART GmbH • Distributed by Arplay Medical
All trademarks remain the property of their respective owners. © 2013 Arplay Medical

Arplay Medical SAS | route de Cîteaux, 21110 Izeure, France
tél +33 3 80 29 74 01 fax +33 3 80 29 76 22 www.arplay.com www.teambest.com

AFRICA | ASIA | EUROPE | LATIN AMERICA | MIDDLE EAST | NORTH AMERICA

