



**arplay medical**

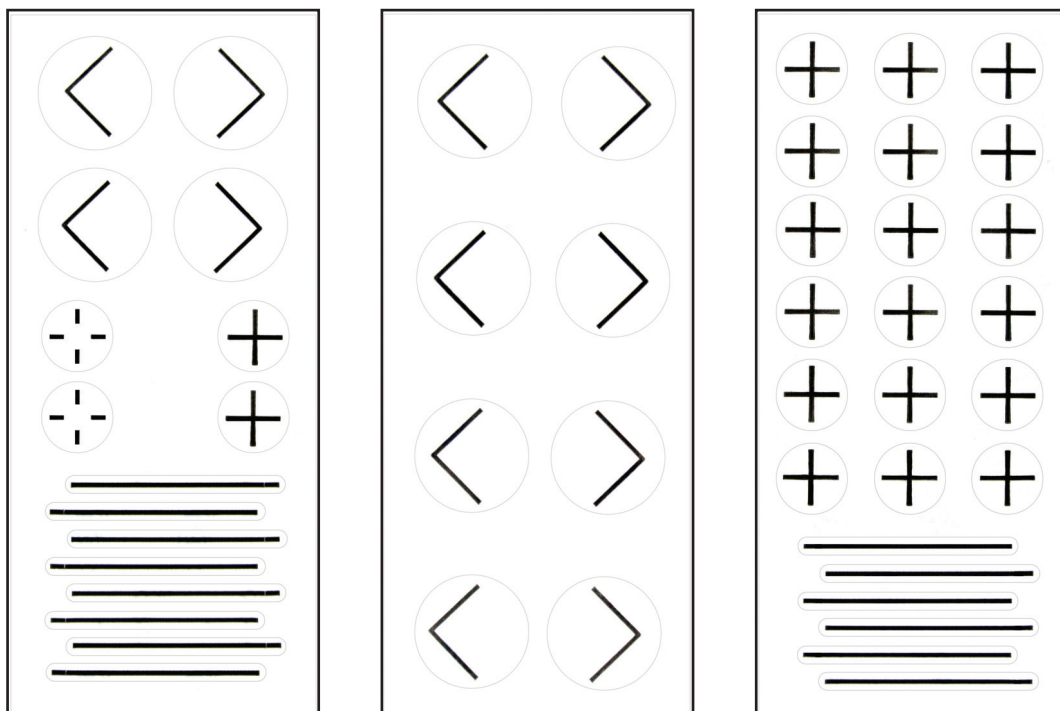


# SKIN MARKERS

## PortalMark™ labels

In lieu of permanent or temporary tattoos, apply PortalMark™ labels to delineate radiation treatment areas.

- Hypo-allergenic
- Latex-free
- Waterproof
- Comfort for up to 2 weeks



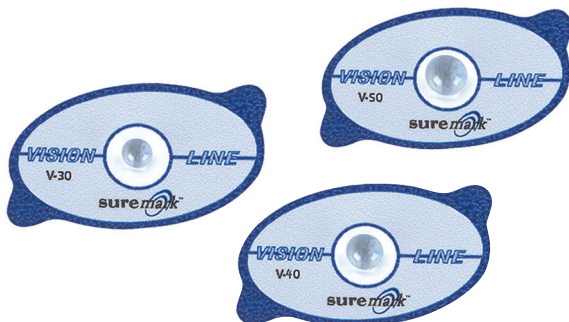
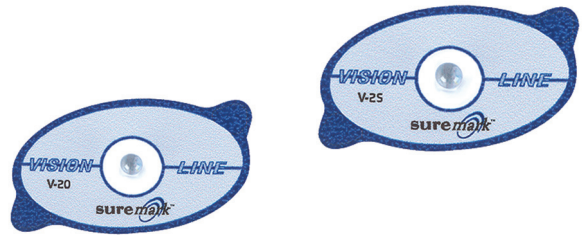
*All labels are packaged with 50 sheets per box.*

## Markers with non-metallic balls

### VISIONMARK™

- Non-metallic marker
- Performs in a variety of applications
- Very accurate
- Reduces the need for repeat examinations

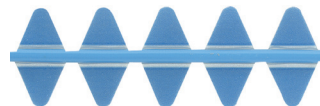
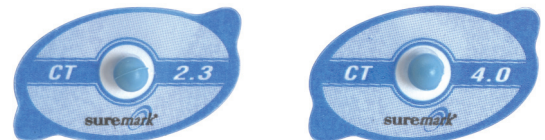
Available in 2 mm and 2.5 mm ball sizes.  
Packaged with 110 markers per box.



### VISIONMARK™ CT

- Non-metallic marker
- Reduces read time on CT scans with virtually no scatter
- Sizes and ball densities are perfect for all CT skin marking applications

Available in 3 mm, 4 mm and 5 mm ball sizes.  
Packaged with 50 markers per box.



### CTLINE ET CTMARK

- Non-metallic marker
- Scatter-free opaque marker
- Perfect for nearly all CT marking applications

Available in 2.3 mm and 4 mm ball sizes.  
Packaged with 110 markers and 50 markers per box.  
Available in 2 mm line.  
300 cm per box.

## Comfort markers with balls

- The most comfortable skin marker
- Flexible and stretchable material
- Easy-peel tab
- Adhesive-free center
- Beautiful artwork is designed to help ease the stress of examinations

Available in 1.5 mm lead, or 2.5 mm non-metallic ball sizes.  
Packaged with 110 markers per box.



## Markers with lead balls

- General use
- Reduce costly repeat examinations
- Larger lead ball sizes for visibility in radiation therapy.

Available in 1 mm, 1.2mm, 1.5 mm, 1.8 mm, 2 mm, 2.5 mm ball sizes.

Packaged with 110 markers per box.

Available in 3 mm, 4 mm, 5 mm ball sizes.

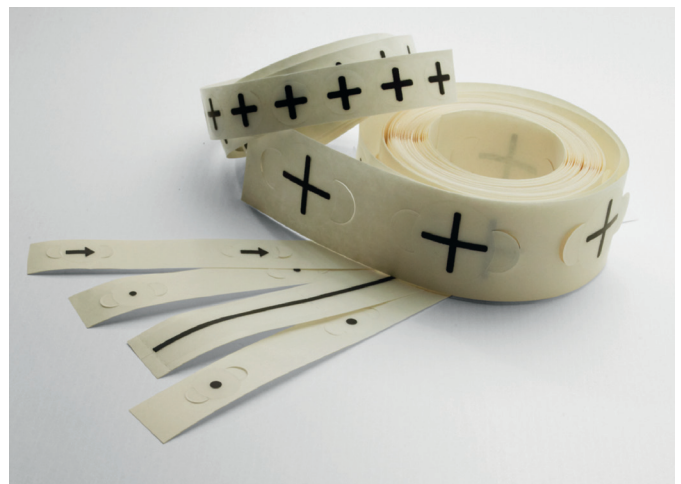
Packaged with 50 markers per box.



## Indicator<sup>®</sup> radiopaque markers

- Work for CT, x-rays, fluoroscopy, angiography
- Create precise reference points without artifacts
- Identify any point of interest including masses, scar tissue, moles, or birthmarks

Available in crosses, dots, arrows, lines, and in a variety of sizes.



## Multi-modality markers



They are made of a hydrogel component with a medical grade adhesive.

A 2 mm inner center hole permits hypodermic needle passage.

- Work for CT, MRI, nuclear medicine, PET, x-rays
- Clear, accurate reference point identification
- Do not melt or leak

Packaged with 50 multi-modality markers per box.

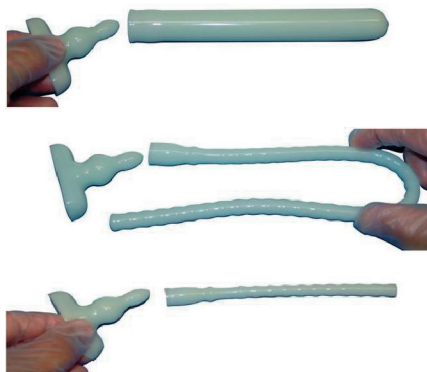
## Vaginal and rectal markers

- Outline pelvic soft tissue during simulation and CT planning
- Highly flexible
- T-bar handle : can easily be removed
- Comfortable for the patient
- Safer for high risk patients

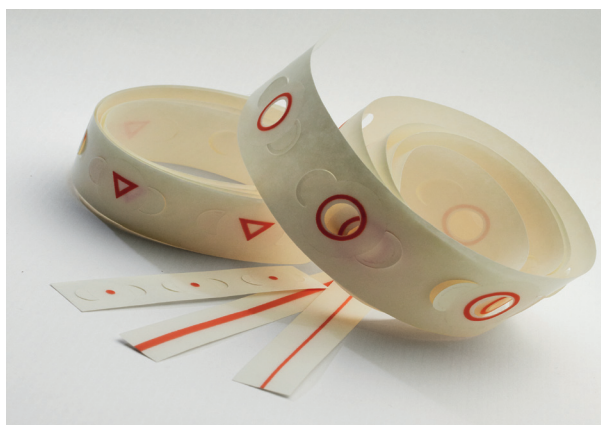
*10 markers per box, 18 cm long, vaginal.*

*10 markers per box, 38 cm long, rectal.*

*10 markers per box, 10 cm long, rectal.*



## Indicator® radiolucent markers for mammography



Their flat, radiolucent design prevents tissue indentation while facilitating a quick, accurate diagnosis by eliminating artifacts and revealing underlying pathology. The double pull tabs and perforated lines make them easy to apply and remove.

*86 lines, 2.5 mm - 132 lines, 1.5 mm -  
138 lines, 0.8 mm.*

*115 triangles, 10 mm.*

*115 circles, 12 mm.*

*Choice of 3 dot sizes in 1.5 mm, 2 mm and 2.5 mm.*

## Protect-A-Mark® covers

These covers were created to save time during simulation and treatment planning. They are made with a medical grade adhesive and protect virtually any temporary mark.

- Last up to 30 days
- Latex-free
- Water-resistant

*Packaged with 80 oval shape or 110 circle shape.*



Find all Arplay Medical products on  
**[www.arplay.com](http://www.arplay.com)**